

# Suc-Leu-Leu-Val-Tyr-AMC

Cat. No. SSB-PS0010  
Lot. No. 163060010



# South Bay Bio

## Suc-LLVY-AMC

Suc-LLVY-AMC a 7-amino-4-methylcoumarin (AMC) labeled fluorogenic substrate can be used to measure the chymotrypsin-like activity of the 20S and 26S proteasome as well as calpains and other chymotrypsin-like proteases. Working concentrations of this substrate is 20-50  $\mu$ M. Cleavage of the peptide by the enzymes liberates the fluorophore AMC which generates strong increase in fluorescence fluorescent that can be monitored fluorimetrically at Ex=345 nm and Em=445 nm.

## Product Information

**Quantity:** 2 mg **Molecular Weight:** 763.9 Da

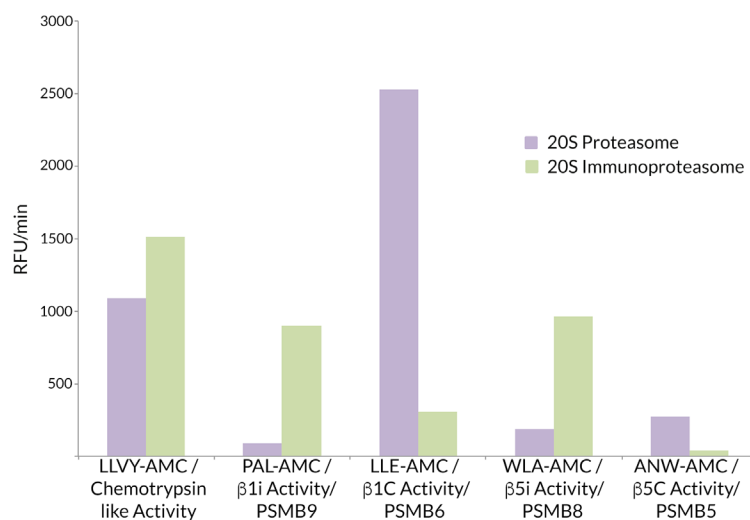
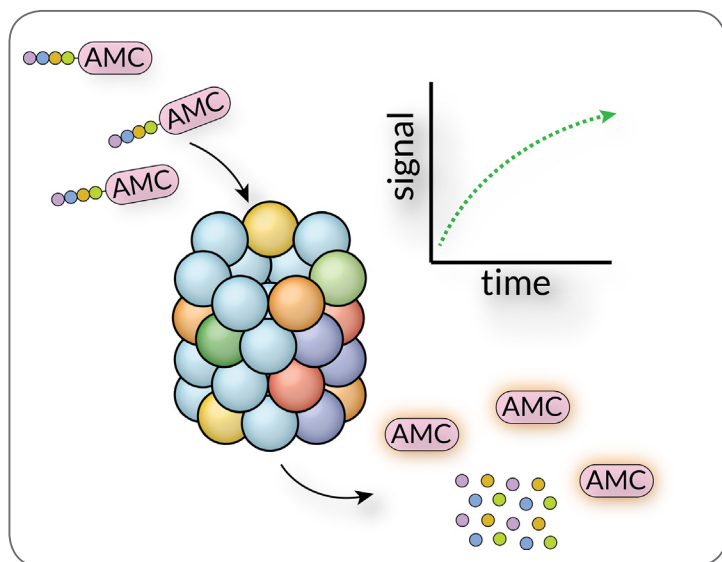
**Concentration:** Lyophilized **Purity:** >95% by HPLC

**Solubility:** 10mM in DMSO **Storage:** -20C to -80C

**Ex/Em (nm):** 345/445

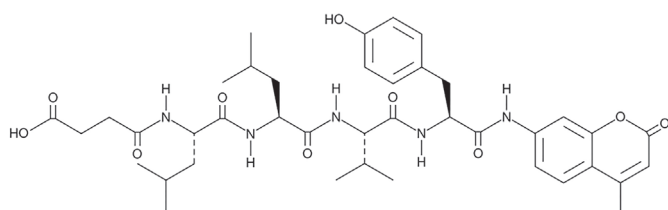
Avoid multiple freeze / thaw cycles

## Quality Control and Performance Data



### 20S Immunoproteasome vs. 20S Constitutive Proteasome Activity.

LLVY-AMC exhibits a high specific activity for both immuno and constitutive proteasome compared to other substrates. Specific activities are higher when using immunoproteasome.



### Suc-LLVY-AMC, Chemical Structure.

Structure of Suc-LLVY-AMC, CAS # 94367-21-2

**For Research Use Only, Not For Use In Humans.**

[www.southbaybio.com](http://www.southbaybio.com)

Contact:  
[info@southbaybio.com](mailto:info@southbaybio.com)

5941 Optical Ct, Suite 229  
San Jose, CA 95138 USA

# Suc-Leu-Leu-Val-Tyr-AMC

Cat. No. SSB-PS0010  
Lot. No. 163060010



# South Bay Bio

## References

- 1) Dammer, E. et al. (2011). Polyubiquitin Linkage Profiles in Three Models of Proteolytic Stress Suggest the Etiology of Alzheimer Disease. J Biol Chem doi: 10.1074/jbc.M110.149633.
  - 2) Gallery, M. et al. (2007). The JAMM motif of human deubiquitinase Poh1 is essential for cell viability. Mol Cancer Ther 6, 262.
  - 3) Cardiac proteasome functional insufficiency plays a pathogenic role in diabetic cardiomyopathy: J. Li, et al.; J. Mol. Cell. Cardiol. 102, 53 (2016), Abstract;
- 

**For Research Use Only, Not For Use In Humans.**

[www.southbaybio.com](http://www.southbaybio.com)

Contact:  
[info@southbaybio.com](mailto:info@southbaybio.com)

5941 Optical Ct, Suite 229  
San Jose, CA 95138 USA