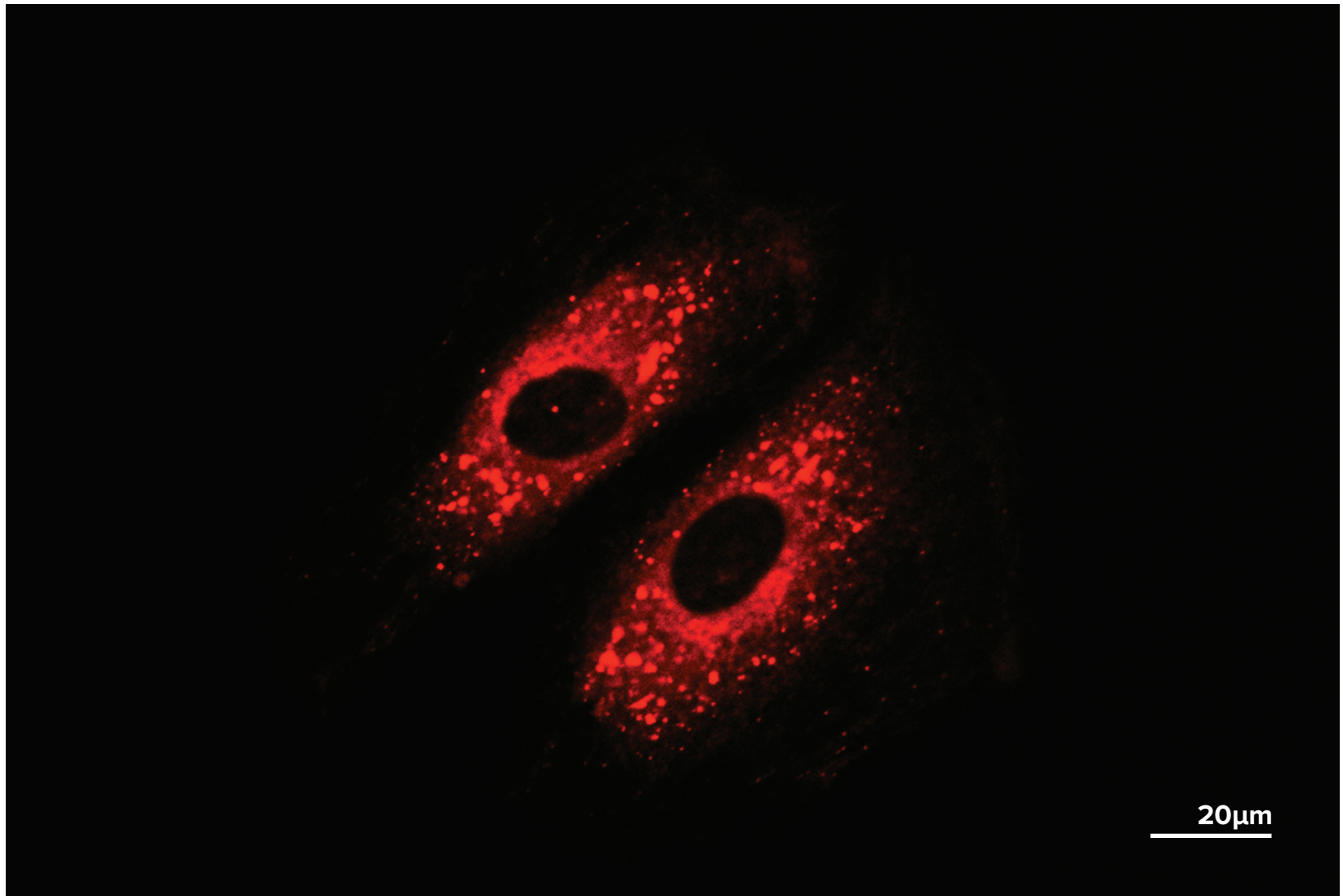




FLUOROPHORES FOR TARGETED INSIGHTS

IraZolve-L1™

IraZolve-L1™ is a cell-permeant stain that localises with polar lipids and can be used in a wide variety of live and fixed cells. IraZolve-L1™ provides excellent and rapid lipid staining useful for fluorescent microscopy applications, localising with lipid droplets and the endoplasmic reticulum in cultured cells.



20µm

REZOLVE SCIENTIFIC Pty Ltd
Office: Level 4, 12 Pirie St, Adelaide 5000
Lab: Level 6, UniSA Cancer Research Institute, North Terrace, Adelaide
Email: support@rezolvescientific.com **Mobile:** +61 (0) 409 195 323



www.rezolvescientific.com



FLUOROPHORES FOR TARGETED INSIGHTS

IraZolve-L1™

Similar to our ReZolve-L1™, our red emitting IraZolve-L1™ has an affinity for lipids which can allow you to monitor changes in cellular lipid localised with lipid droplets and the endoplasmic reticulum. IraZolve-L1™ provides excellent photostability and can be useful for a range of fluorescent applications, as it can be excited by UV and standard 405 nm light sources. It is also computable with imaging by multiphoton microscopy. Its large Stokes shift (ex/em 405/600 nm) provides multiple options for dual and multicolour labelling applications.

Specifications

Subcellular localisation	Lipid rich sites
Colour	Red
For Use With (equipment)	Fluorescence microscopy, flow cytometry, microplate reader, multiphoton microscopy
Tested in	Human cell culture lines (22RV1, LNCaP, DU145, PNT1a), murine cell culture lines (H9c2).
Sample Preparations	Live, paraformaldehyde fixed.
Excitation/Emission	UV or 405 / 600 nm
Solubility	DMSO
Shipping	Room Temperature
Storage	Room Temperature

REZOLVE SCIENTIFIC Pty Ltd
Office: Level 4, 12 Pirie St, Adelaide 5000
Lab: Level 6, UniSA Cancer Research Institute, North Terrace, Adelaide
Email: support@rezolvescientific.com **Mobile:** +61 (0) 409 195 323



www.rezolvescientific.com