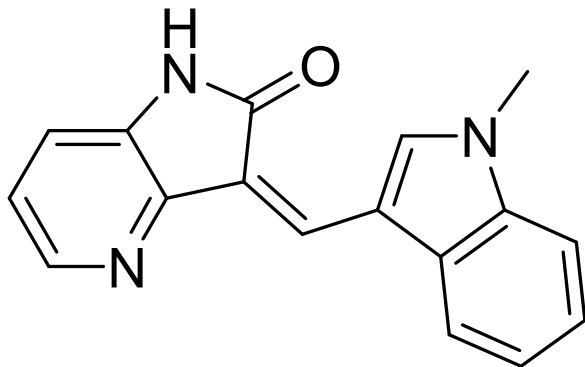


GW441756

SYN-1044



3-((1-methyl-1H-indol-3-yl)methylene)-1H-pyrrolo[3,2-b]pyridin-2(3H)-on

CAS Registry No.: 504433-23-2

Smiles String:

Cn1cc(c2c1cccc2)/C=C\3/c4c(cccn4)NC3=O

Molecular Weight: 275.3

Molecular Formula: C₁₇H₁₃N₃O

Lot Number: Refer to vial

¹H-NMR: Available on request

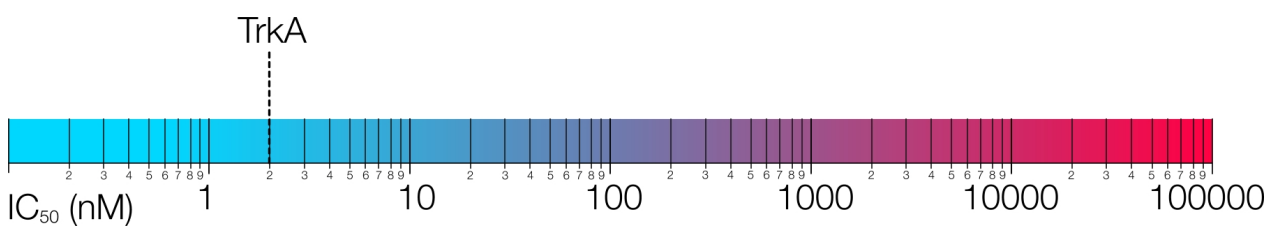
HPLC (Purity): > 95.0% @ 254 nm

ES-MS: Available on request

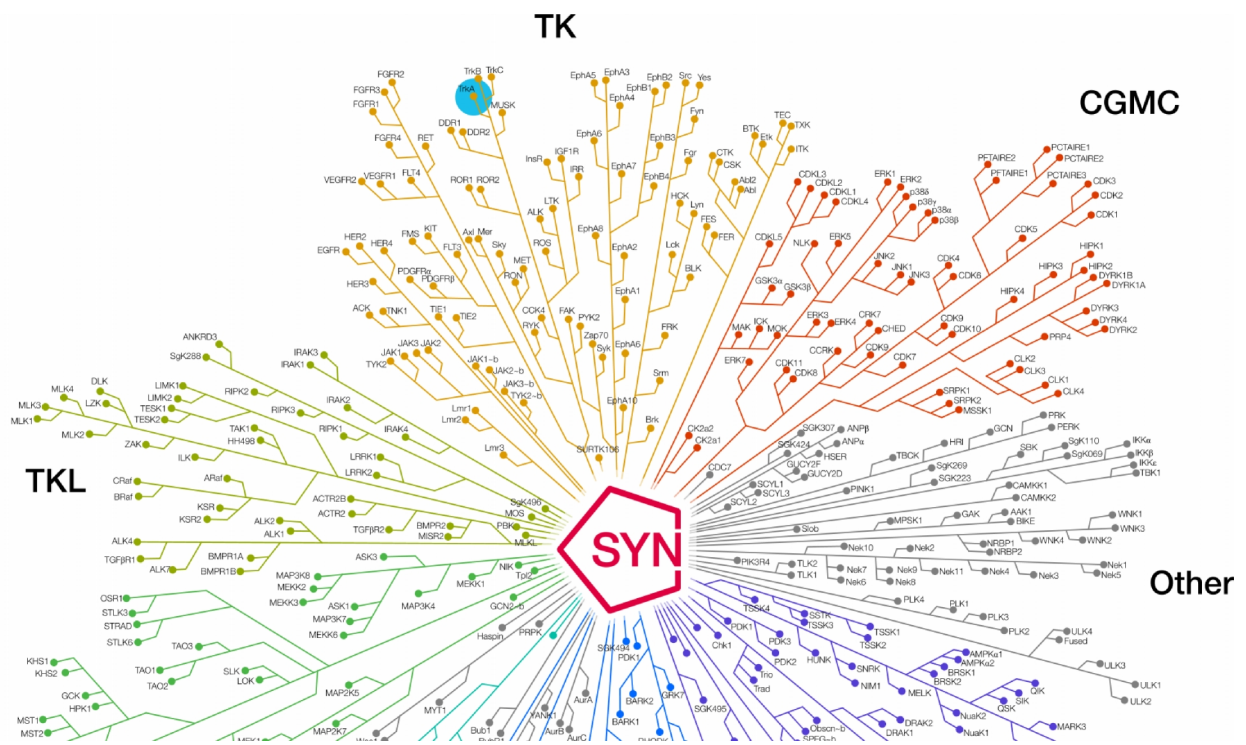
Description:

GW441756 is an orally active, potent and highly selective TrkA tyrosine kinase inhibitor (IC₅₀ of 2 nM). It specifically blocks TrkA-induced cell death in a dose-dependent manner.

Biological Activity



Kinome Mapping



Shipping and Storage Temperature

Shipping:
Ambient

Storage:
2 years -20C, Powder 1 month, -4C in DMSO, More than one month -80C in DMSO

Solubility

DMSO 25mg/mL, Ethanol <1mg/mL

Preparing Stock Solutions

Stock Solution (1ml DMSO)	1mM	10mM	20mM	50mM
Mass(mg)	0.2753	2.7530	5.5060	13.7650

References

1. Kudo TA, Kanetaka H, Mizuno K, Ryu Y, Miyamoto Y, Nunome S, Zhang Y, Kano M, Shimizu Y, Hayashi H . Dorsomorphin stimulates neurite outgrowth in PC12 cells via activation of a protein kinase A-dependent MEK-ERK1/2 signaling pathway. Genes Cells. 2011 Nov;16(11):1121-32. doi: 10.1111/j.1365-2443.2011.01556.x. Epub 2011 Oct 12.

Ordering Information

To order more of this or any other SYNkinase compound, go to synkinase.com, Call us Toll Free (US Only) at 1- 877-854-6273 or email orders@synkinase.com.

Product Datasheet (Rev. 1.1)