

Lapatinib

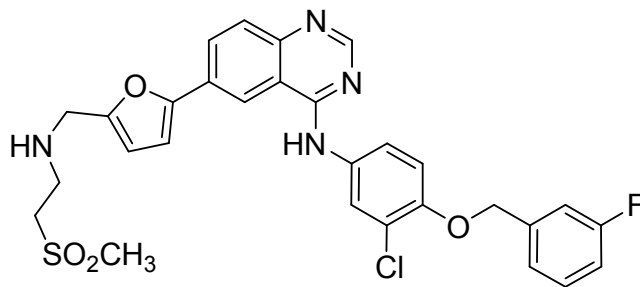
SYN-1052

N-(4-(3-fluorobenzyloxy)-3-chlorophenyl)-6-(5-((2-(methylsulfonyl)ethylamino)methyl)furan-2-yl)quinazolin-4-amine

CAS Registry No.: 231277-92-2

Smiles String:

CS(=O)(=O)CCNCC1CCC(O1)C2CCC3C(C2)C(NC3)Nc4ccc(c(c4)Cl)OCc5cccc(c5)F



Molecular Weight: 581.06

Molecular Formula: C₂₉H₂₆ClFN₄O₄S

Lot Number: Refer to vial

¹H-NMR: Available on request

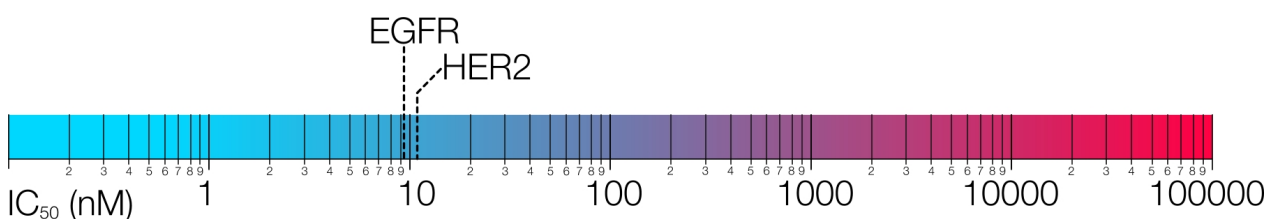
HPLC (Purity): > 95.0% @ 254 nm

ES-MS: Available on request

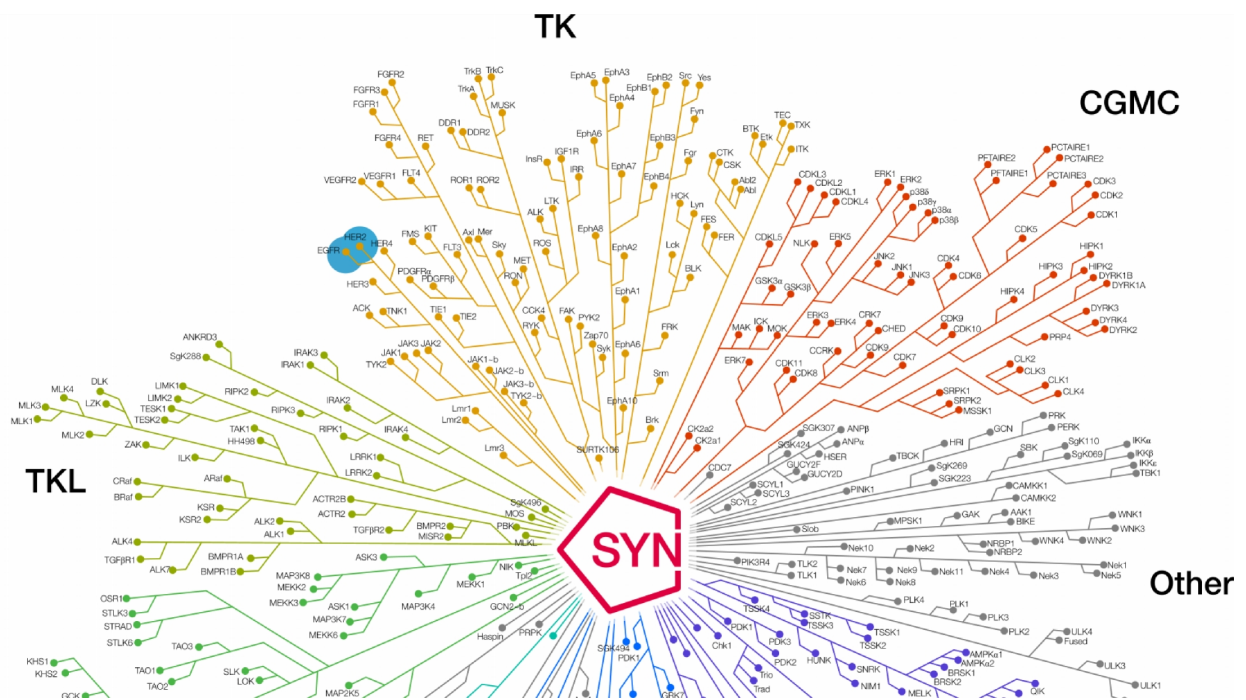
Description:

Lapatinib is an ATP-competitive epidermal growth factor receptor (EGFR) and HER2/neu (ErbB-2) dual tyrosine kinase inhibitor, with IC₅₀ values of 10.8 and 9.2 nM respectively. It is an orally active drug for treatment of breast cancer and other solid tumors.

Biological Activity



Kinome Mapping



Shipping and Storage Temperature

Shipping:
Ambient

Storage:
2 years -20C, Powder 1 month, -4C in DMSO, More than one month -80C in DMSO

Solubility

DMSO 100 mg/mL, Ethanol 1mg/mL

Preparing Stock Solutions

Stock Solution (1ml DMSO)	1mM	10mM	20mM	50mM
Mass(mg)	0.5811	5.8110	11.6220	29.0550

References

1. Xia W , Mullin RJ, Keith BR, Liu LH, Ma H, Rusnak DW, Owens G, Alligood KJ, Spector NL . Anti-tumor activity of GW572016: a dual tyrosine kinase inhibitor blocks EGF activation of EGFR/erbB2 and downstream Erk1/2 and AKT pathways. Oncogene. 2002 Sep 12;21(41):6255-63.

Ordering Information

To order more of this or any other SYNkinase compound, go to synkinase.com, Call us Toll Free (US Only) at 1- 877-854-6273 or email orders@synkinase.com.

Product Datasheet (Rev. 1.1)