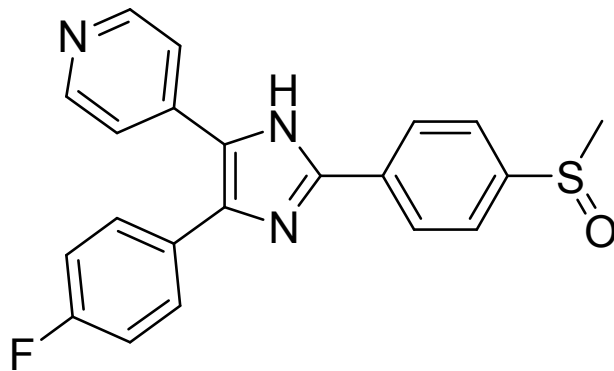


SB203580

SYN-1074



4-(4-(4-fluorophenyl)-2-(4-(methylsulfinyl)phenyl)-1H-imidazol-5-yl)pyridine

CAS Registry No.: 152121-47-6

Smiles String:

CS(=O)c1ccc(cc1)c2[nH]c(c(n2)c3ccncc3)c4ccc(cc4)F

Molecular Weight: 377.43

Molecular Formula: C₂₁H₁₆FN₃OS

Lot Number: Refer to vial

¹H-NMR: Available on request

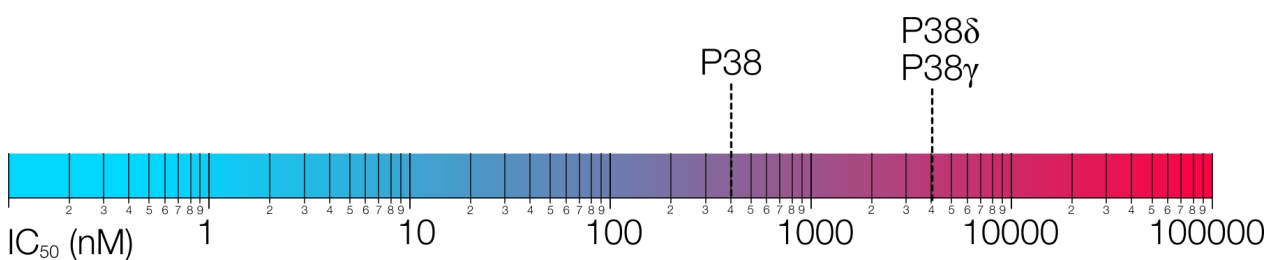
HPLC (Purity): > 95.0% @ 254 nm

ES-MS: Available on request

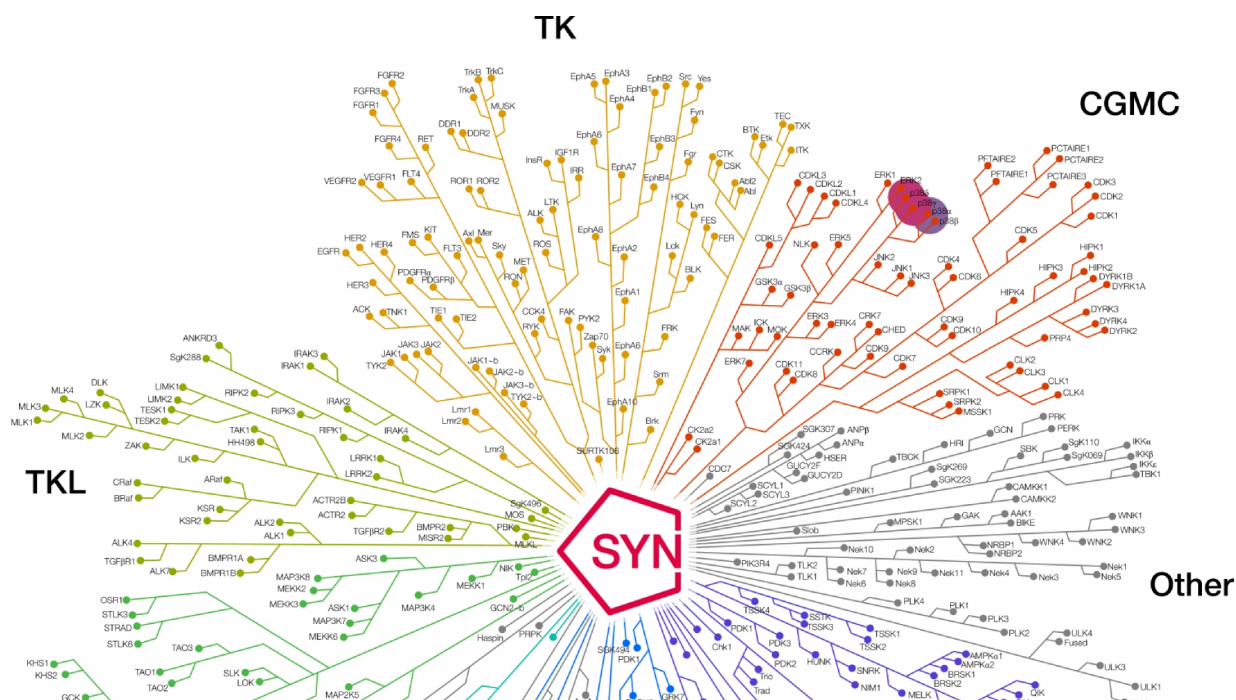
Description:

SB203580 is a specific, ATP competitive, cell-permeable inhibitor of p38 MAPK with IC₅₀ of 0.3-0.5 μM. It is 10-fold less sensitive to SAPK3(106T) and SAPK4(106T) and blocks PKB phosphorylation with IC₅₀ of 3-5 μM.

Biological Activity



Kinome Mapping



Shipping and Storage Temperature

Shipping:

Ambient

Storage:

2 years -20C, Powder 1 month, -4C in DMSO, More than one month -80C in DMSO

Solubility

DMSO 76mg/mL, Ethanol 5mg/mL

Preparing Stock Solutions

Stock Solution (1ml DMSO)	1mM	10mM	20mM	50mM
Mass(mg)	0.3374	3.3743	6.7486	16.8715

References

1. Cuenda A, Rouse J, Doza YN, Meier R, Cohen P, Gallagher TF, Young PR, Lee JC. SB 203580 is a specific inhibitor of a MAP kinase homologue which is stimulated by cellular stresses and interleukin-1. FEBS Lett. 1995 May 8;364(2):229-33.

Ordering Information

To order more of this or any other SYNkinase compound, go to synkinase.com, Call us Toll Free (US Only) at 1- 877-854-6273 or email orders@synkinase.com.

Product Datasheet (Rev. 1.1)