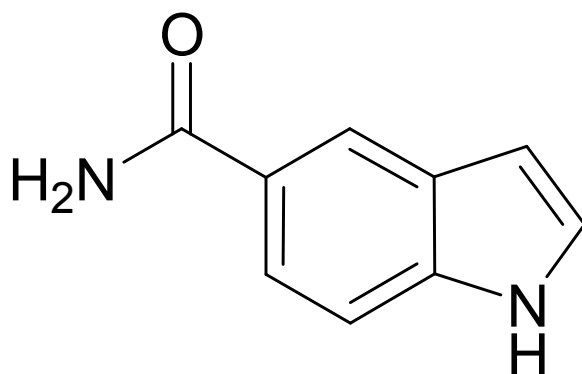


SD169

SYN-1079



1H-indole-5-carboxamide

CAS Registry No.: 1670-87-7

Smiles String: c1cc2c(cc[nH]2)cc1C(=O)N

Molecular Weight: 160.17

Molecular Formula: C₉H₈N₂O

Lot Number: Refer to vial

¹H-NMR: Available on request

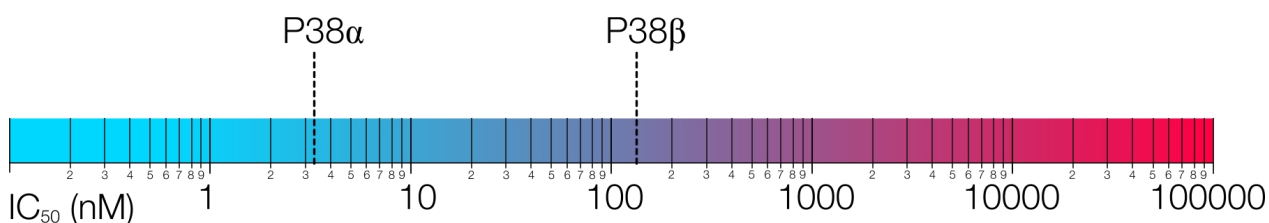
HPLC (Purity): > 95.0% @ 254 nm

ES-MS: Available on request

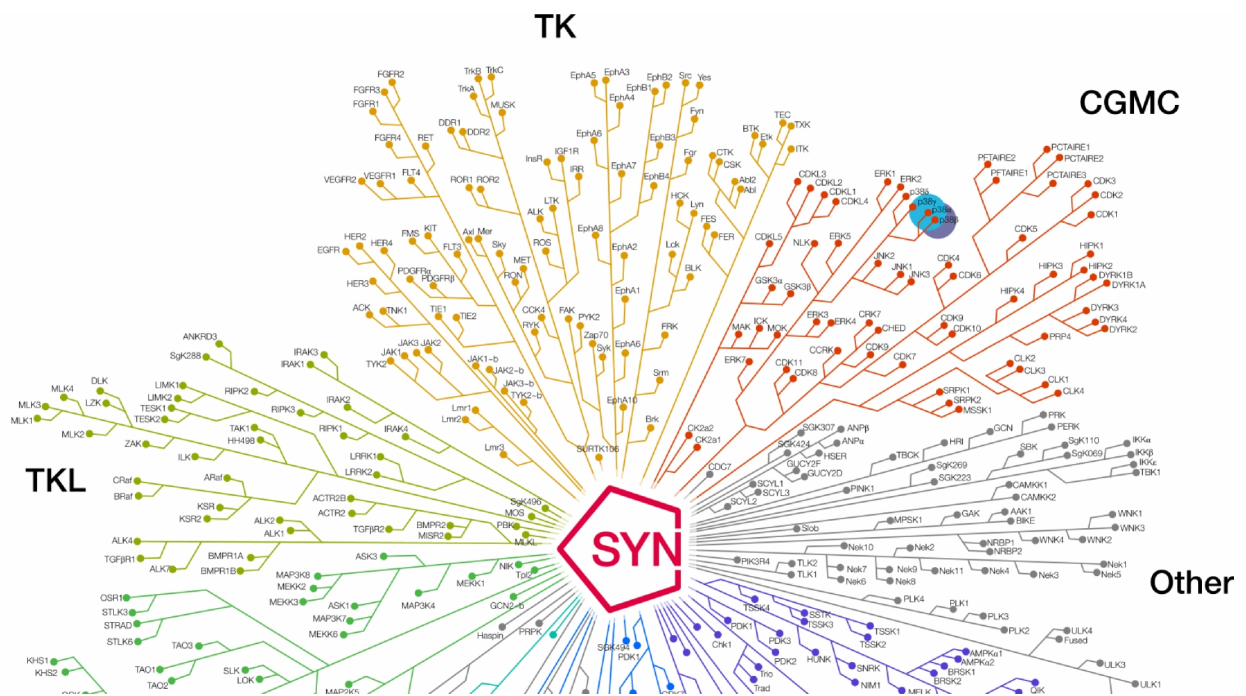
Description:

SD169 is an orally available, ATP-competitive, isoenzyme-selective Mitogen-Activated Protein Kinase (MAPK) inhibitor. It is 38 times more potent against p38 α MAP kinase (IC₅₀ of 3.2 nM) over p38 β MAP kinase (IC₅₀ of 122 nM).

Biological Activity



Kinome Mapping



Shipping and Storage Temperature

Shipping:
Ambient

Storage:
2 years -20C, Powder 1 month, -4C in DMSO, More than one month -80C in DMSO

Solubility

DMSO 10mg/mL, Ethanol 1mg/mL

Preparing Stock Solutions

Stock Solution (1ml DMSO)	1mM	10mM	20mM	50mM
Mass(mg)	0.1601	1.6018	3.2036	8.0090

References

1. Medicherla S, Protter AA, Ma JY, Mangadu R, Almirez R, Koppelman B, Kerr I, Navas TA, Movius F, Reddy M, Liu YW, Luedtke G, Perumattam J, Mavunkel B, Dugar S, Schreiner GF. Preventive and therapeutic potential of p38 alpha-selective mitogen-activated protein kinase inhibitor in nonobese diabetic mice with type 1 diabetes. J Pharmacol Exp Ther. 2006 Jul;318(1):99-107. Epub 2006 Apr 7.

Ordering Information

To order more of this or any other SYNkinase compound, go to synkinase.com, Call us Toll Free (US Only) at 1- 877-854-6273 or email orders@synkinase.com.

Product Datasheet (Rev. 1.1)